

Twitter Thread by J A C K I S



JACKIS
[@jackis_trader](#)

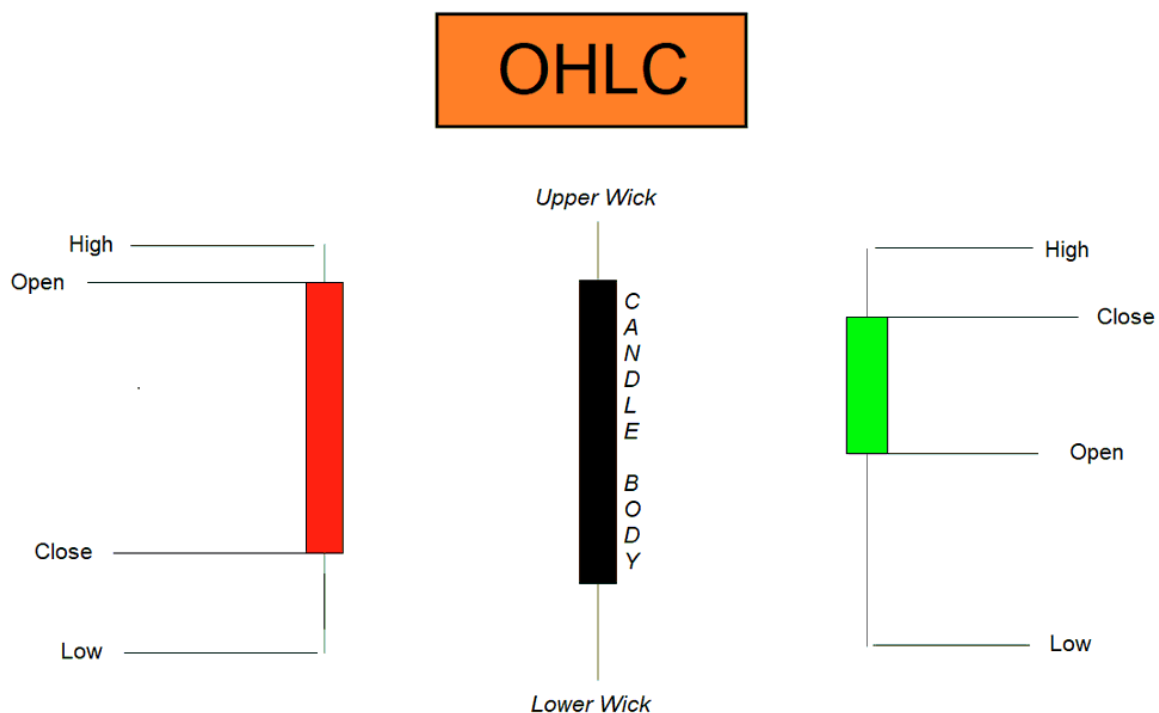


OHLC - Open, High, Low & Close

Everybody that looks into the charts absolutely must know what OHLC means.

Doesn't matter which TF you are looking at, each candle consists of these.

- Wick is the thinnest of the volume of the candle
- Body is the strongest - Most Volume traded



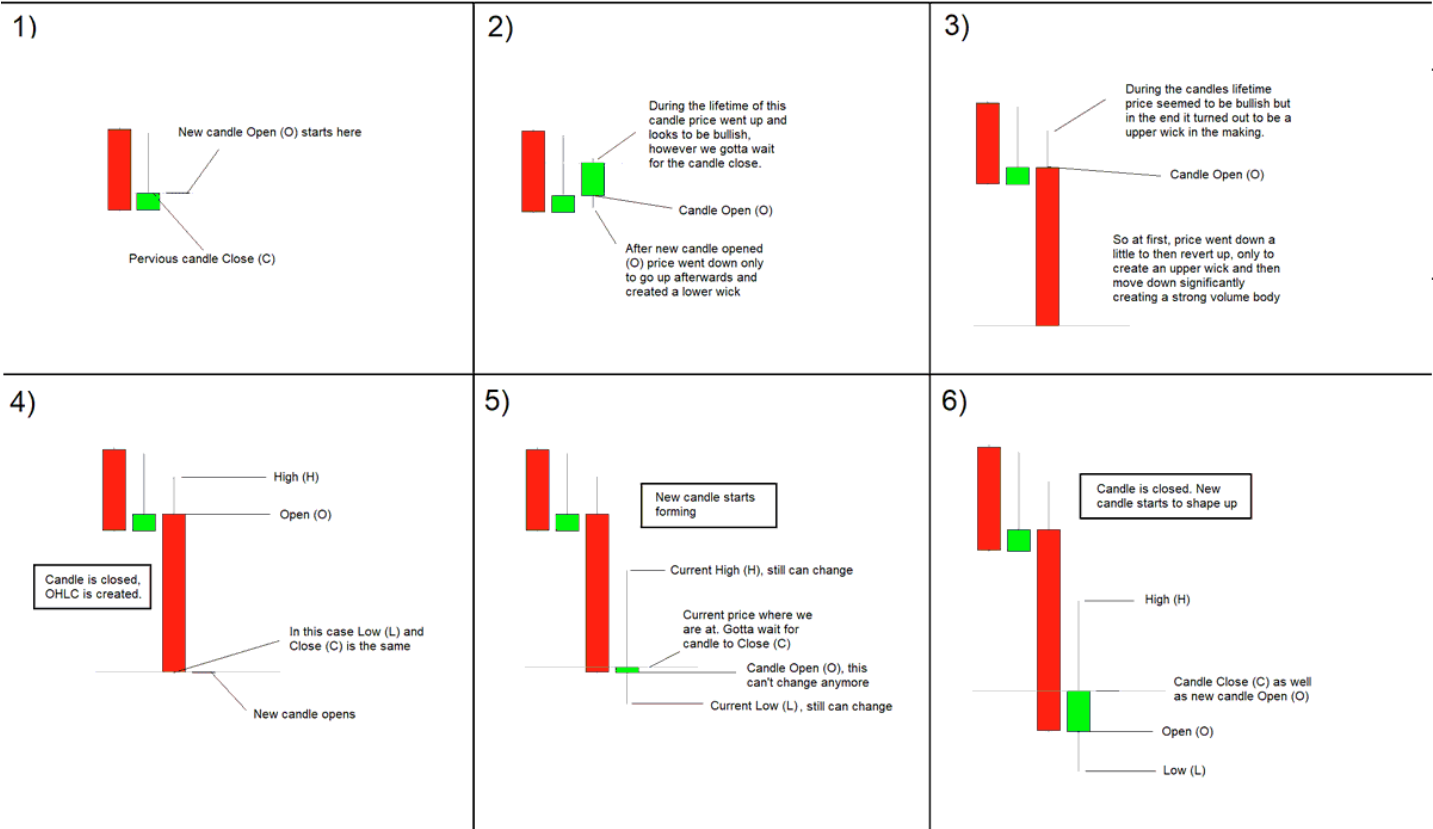
Anatomy of an OHLC in the making.

Each candle on any TF or any market forms this way. It doesn't matter whether this is a Monthly candle or a 1-minute candle

Each candle will have its own OHLC data.

Each candle starts with "O", then shapes "H" and "L" and ends with "C"

Anatomy of an OHLC in the making



Understanding this anatomy is absolutely crucial for your future development in navigating yourself in the markets

OHLC are also the most significant levels in the markets especially on the higher timeframes such as Daily, Weekly and Monthly.