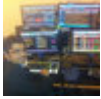


Twitter Thread by Pritesh Mehta



Pritesh Mehta

[@PriteshFCB](#)



When SBI starts outshining #banknifty, pay attention. Ratio of SBI vs BankNifty shows a multi-month base break, further outperformance is expected from #SBIN #nifty50 Ratio is sustaining above 2-yr mean since Feb 2021. Such strength has not been at display since 2015

