

Twitter Thread by itrade(DJ)

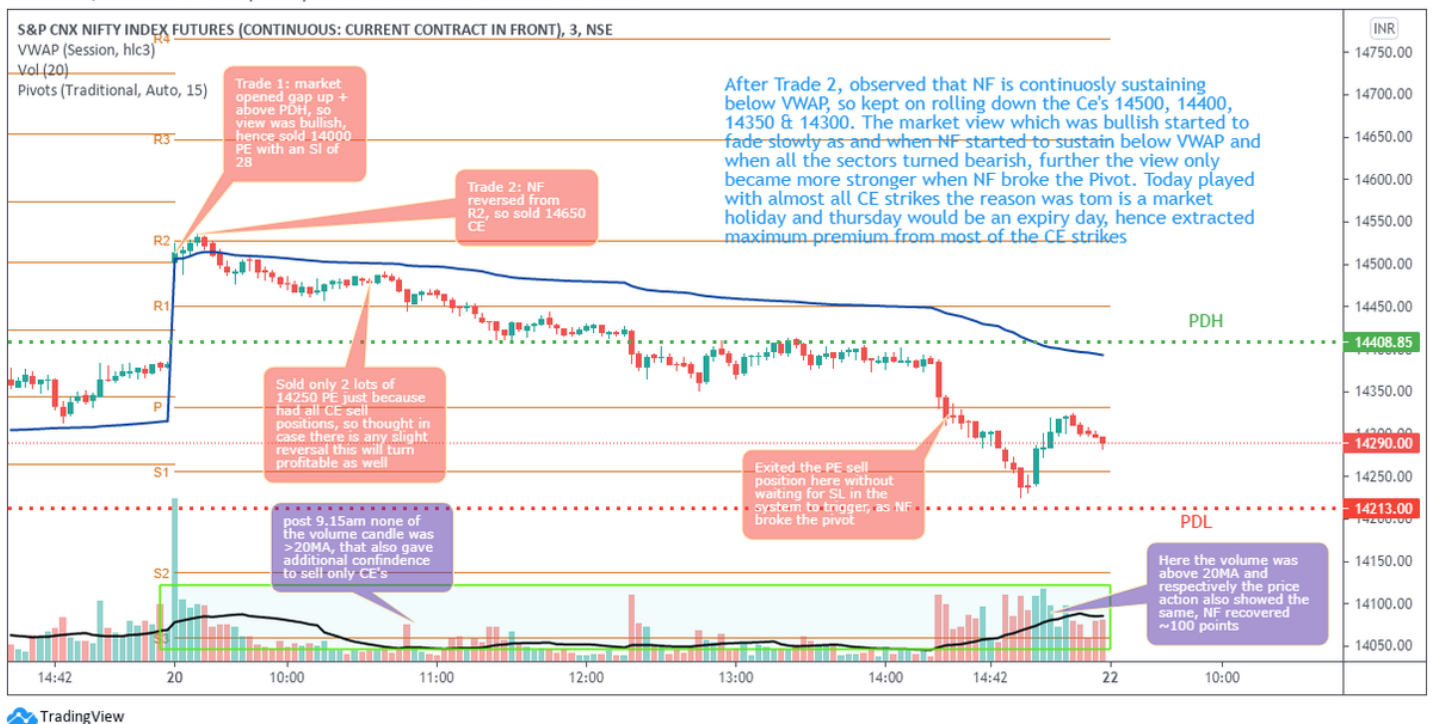


itrade(DJ)
@ITRADE191



For your understanding <https://t.co/U89feuPEhC>

NSE:NIFTY1, 3 14290.00 ▼ -84.15 (-0.59%) O:14296.05 H:14296.15 L:14283.10 C:14290.00



Today morning I was bullish looking at SGX Nifty. The first put I sold was 14000 PE.

After that market took resistance at R2, then I changed my view. Sold 14650 CE and then even uptill 14300 CE.

pic.twitter.com/Bo4La6kJRe

— itrade(DJ) (@ITRADE191) April 20, 2021