

## Twitter Thread by The\_Chartist ■



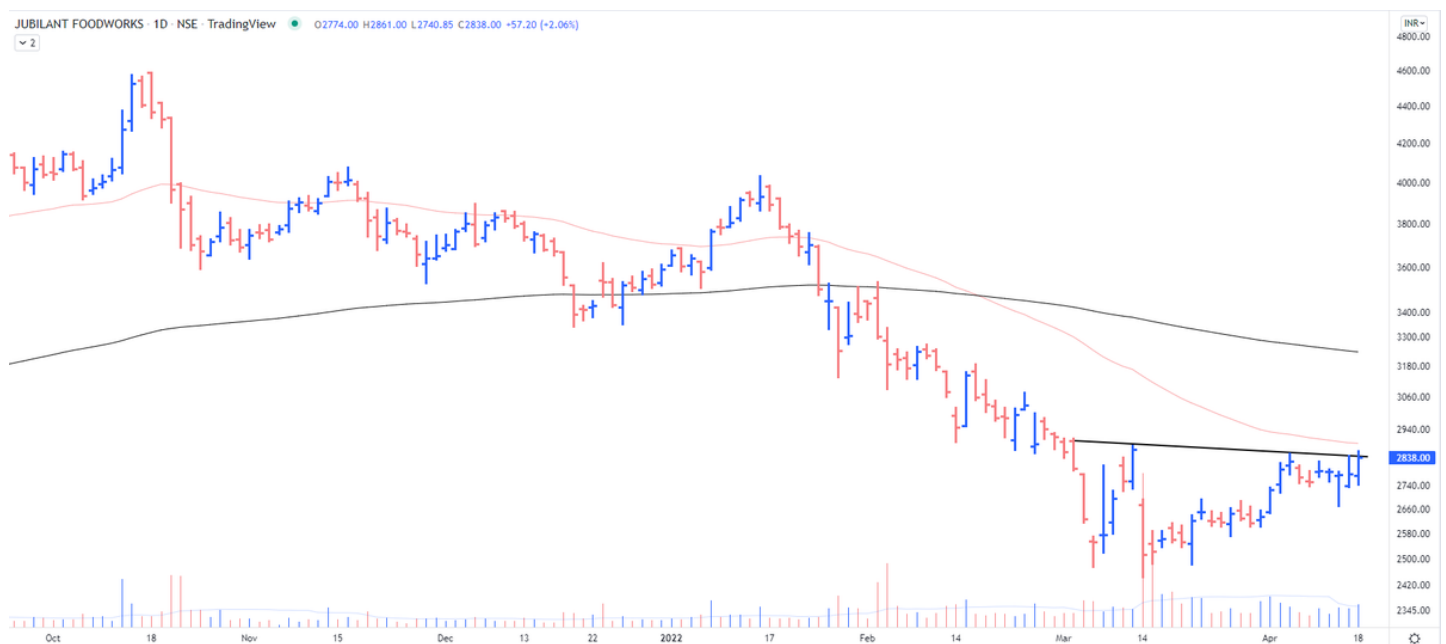
**The\_Chartist** ■

[@charts\\_zone](#)



Also, you must be vigilant here because in these cases 50 MA and 200 MA act as a strong resistance. However, both the resistance zone and the 50 EMA are getting in closer. Confluence zone.

Jubilant Foodworks <https://t.co/oarPRnT0Vvk>



The chart signals an upcoming violent move. I may be wrong but the risk is getting too low in here. Keep an eye out.

Holding this from lower levels - the reason being capitulation.

Jubilant Foodworks <https://t.co/M1vLYEbkef> [pic.twitter.com/TVXZKo028g](https://pic.twitter.com/TVXZKo028g)

— The\_Chartist \U0001f4c8 (@charts\_zone) [April 18, 2022](#)