

## Twitter Thread by The\_Chartist ■



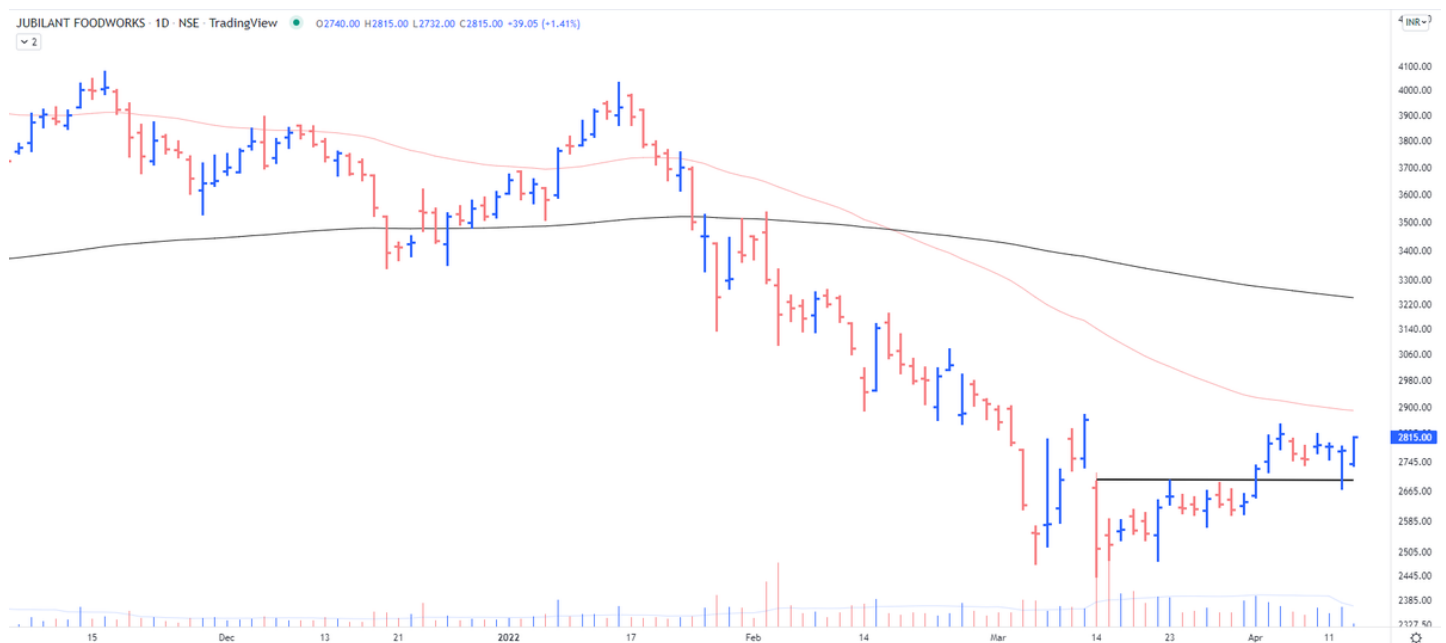
**The\_Chartist** ■

@charts\_zone



**Pulled back from the support nicely. The next hurdle is at 2860**

**Jubilant Foodworks** <https://t.co/ZBMshWfg7R>



The selling volumes with indecisive candles tell a lot about the selling pressure. I don't think there are more sellers left in here. It is one of the biggest trades for me and my views may be biased but SL is at a cost now so I lose nothing unless it gaps down.

Jubilant Food <https://t.co/M1vLYEsngf> [pic.twitter.com/5GOCWtgScD](https://pic.twitter.com/5GOCWtgScD)

— The\_Chartist \U0001f4c8 (@charts\_zone) [April 7, 2022](#)