

## Twitter Thread by [Learn to Trade](#)

[Learn to Trade](#)

[@learntotrade365](#)



Identify INTRADAY index direction & execute trades

Twitter thread ■

One of the simplest way to identify and execute trades along with the direction

Retweet to benefit maximum

[@Mitesh\\_Engr](#) [@ITRADE191](#) [@hjadav](#) [@ca\\_mehtaravi](#) [@ProdigalTrader](#)  
[@caniravkaria](#) [@itsmerajarshita](#)

WANT TO IDENTIFY  
INTRADAY INDEX  
DIRECTION ?

LEARNING THREAD

A SIMPLE TRADING STRATEGY  
TO EXECUTE TRADES ALONG WITH  
THE TREND

Rules to make it more easier

**SIMPLE RULES WHICH CAN HELP A LOT:**

1] REFER THE CHART TO UNDERSTAND THE BULLISH & BEARISH EXECUTION.

2] Stages of exit

- SL BASED EXIT - Initial sl placed below that candle low
- Exiting when the candle close below EMA9 & below that candle low i will exit
- As it is intraday time based exit by 3:00 to 3:15 p.m if above 2 condition not breached
- Or exit at 1:2 to 1:3 risk reward

3] Avoiding entry post 2:30 p.m as it is intraday  
 If Initial sl is more 0.5 % of spot value i will avoid  
 Spot - 16500 means 0.5% of it is 82 points

4] Continuous 2 profits or 2 loss trades avoid the rest of the day trading that particular index

5] If missed anything here check the charts in this thread

Chart example no - 1



Chart example no - 2

3/11



Chart example no - 3

4/11



Chart example no - 4

5/11



Chart example no - 5

6/11



Chart example no -6

7/11



Chart example no -7

8/11

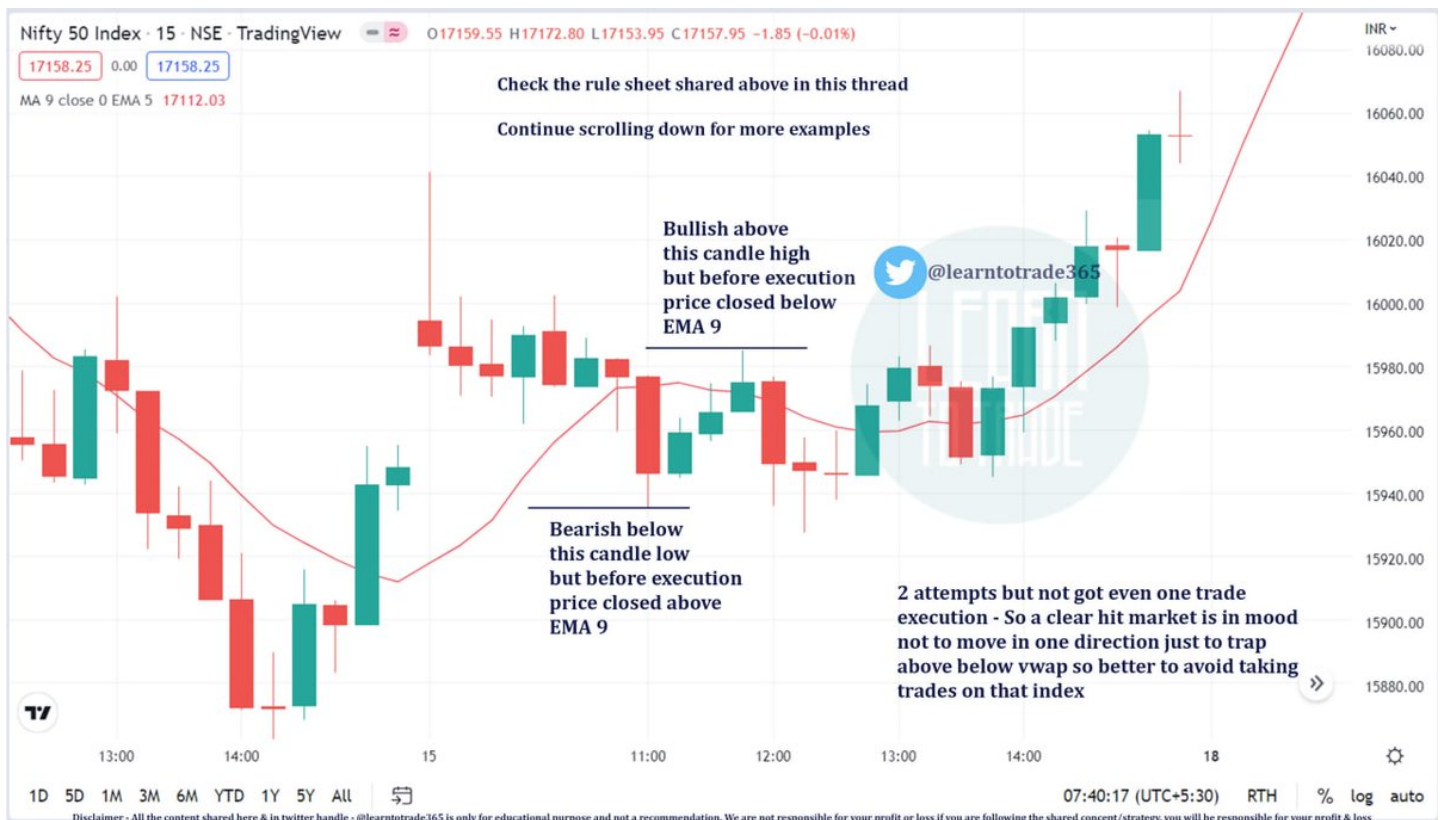


Chart example no -8

9/11



Chart example no -9

10/11





End of the thread

Support us by Retweet & Like the first tweet if this thread ■ to reach and benefit maximum traders

Follow us now [@learntotrade365](https://twitter.com/learntotrade365) for more Learning content